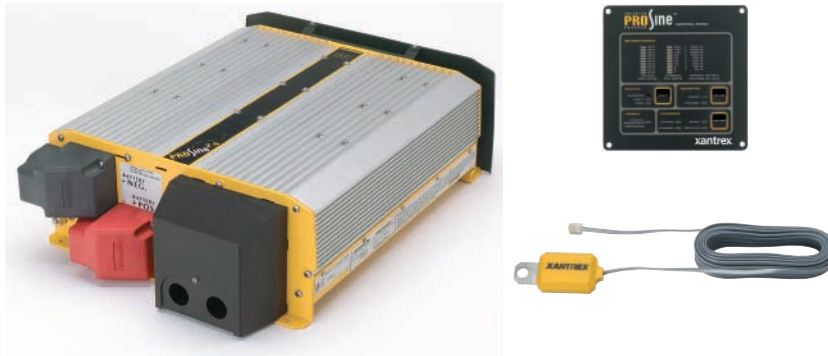


Prosine 2.5

2500 Watt True Sine Wave Inverter/Chargers



NRTL
CSA/NRTL Certified to UL & CSA Standards

Provides 2500 watts of true sine wave AC power from a DC source and multistage battery charging

A powerful all-in-one solution, Prosine 2.5 inverter/chargers deliver unsurpassed clean true sine wave electrical power for all types of appliances along with technologically superior three-stage charging for longer battery life. The system includes a full function remote control panel and battery temperature sensor.

Product Features

- ▶ 2500 watt inverter, 50 A high surge capability
- ▶ Power factor corrected multistage charger (100 A for 12 V model; 50 A for 24 V model)
- ▶ True sine wave output (crystal controlled)
- ▶ Built-in 30 A transfer switch automatically transfers between inverter power and incoming AC power
- ▶ Equalization mode conditions batteries for longer life
- ▶ Power sharing reduces charging current when AC loads are activated to prevent tripping of shorepower breaker
- ▶ Remote panel included
- ▶ Compact, lightweight, and easy to install
- ▶ One year warranty

Remote Control Panel

- ▶ Independent inverter and charger on/off controls
- ▶ LED bar graph display of DC volts and amps
- ▶ LED fault diagnostics

Protection Features

- ▶ Over voltage and under voltage protection
- ▶ Over temperature protection and automatic overload protection
- ▶ Short circuit AC backfeed protection

Options

- ▶ Available in 12 volt and 24 volt models
- ▶ DC wiring box for residential home installation
- ▶ GFCI-equipped AC wiring box
- ▶ Advanced Control System (ACS) Remote Panel

Xantrex Technology Inc.

Headquarters
8999 Nelson Way
Burnaby, British Columbia
Canada V5A 4B5
800 670 0707 Toll Free
604 420 1591 Fax

5916 195th Northeast
Arlington, Washington
USA 98223
800 446 6180 Toll Free
360 925 5144 Fax

Prosine 2.5

2500 Watt True Sine Wave Inverter/Chargers

Electrical Specifications - Inverter

| | |
|---|-------------------------------------|
| Output power (continuous) | 2500 watts |
| Surge rating (5 sec.) | 4000 watts |
| Output current (peak) | 50 A |
| Output voltage (at no load) | 120 VAC +/-3% |
| Output voltage (over full load and battery voltage range) | 120 VAC RMS -10% / +4% |
| Output frequency | 60 Hz +/-0.05% (crystal controlled) |
| Output waveform | True sine wave <5% THD |
| Peak efficiency | 88% |
| No load current draw (search mode) | <3 W |
| No load current draw (with inverter on) | <60 W |
| Input DC voltage range (12 V/24 V) | 10 – 16 VDC / 20 – 32 VDC |

Electrical Specifications - Charger

| | |
|---|-----------------------------------|
| Charger rate (12 V/24 V) | 100 A/50 A |
| Output voltage (nom. 12 V/24 V - depending on settings) | |
| ▶ Charge | 13.8 – 14.8 VDC / 27.6 – 29.6 VDC |
| ▶ Float | 13.1 – 14.2 VDC / 26.2 – 28.4 VDC |
| ▶ Equalize | 14.0 – 18.0 VDC / 28.0 – 26.0 VDC |
| Charge control | 3 stage with manual equalize |
| Charge temperature compensation | 3 settings or sensor |
| Efficiency | >80% |
| AC input power factor (charger on) | 0.99 |
| Input AC voltage range | 90 – 135 VAC |

General Specifications

| | |
|---|--|
| Compatible battery types | Flooded / gel |
| Transfer relay rating | 30 A |
| Transfer time (AC to inverter and inverter to AC) | 20 ms typical |
| Storage temperature range | -22°F – 158°F (-30°C – 70°C) |
| Operating temperature range | 32°F – 140°F (0°C – 60°C) |
| Dimensions (H x W x D) | 5.5 x 15.0 x 20.0" (140 x 381 x 508 mm) |
| Weight | 32.0 lb (14.5 kg) |
| Warranty | Two years |
| Part numbers | 805-3025 (12 V w/standard remote) |
| | 805-3026 (24 V w/standard remote) |
| | 808-3026 (DC wiring box) |
| | 808-3027 (GFCI option) |
| | 808-2035 (ACS remote display - optional) |

Regulatory Approvals

CSA/NRTL approved to CSA 107.1, UL 458 and UL 1741, FCC Class A

Note: Specifications subject to change without notice.